

# Shaping Tomorrow's Entrepreneurial Healthcare Innovators

# Hello.

**Welcome to IMU,  
We nurture passions  
and support dreams,  
preparing the  
groundbreakers  
of healthcare.**





Build your future in an institution that ventures beyond just dispensing knowledge. At IMU, you'll be inspired, nurtured, and mentally equipped to take on the dynamic field of healthcare and business. For over a decade, we've guided thousands of students like you in reaching their dreams. But don't just take our word for it. Let the data do the talking.

# SETARA 2022

Highest accolade by MoHE for the third consecutive year

## 5 STARS

QS Stars Rating System

## 6

Campuses within Malaysia

## 36

Partner Universities worldwide

## 244

Industry partners

## 316

Research papers published (2023)

## 43%

Research publications in Tier 1 and Tier 2 journals (2023)

## 4,049

Students (2023)

## 6,325

Transfers to Partner Universities in UK, US, NZ, Australia, Ireland, Canada, and China

## 15,617

Alumni worldwide



Welcome to a pioneering journey at the School of Business and Technology — where healthcare meets innovation, and leaders of the future are shaped.

Welcome to the School of Business and Technology, an exciting addition to IMU's family of schools in 2024. As one of the founding schools under the new Faculty of Business and Social Sciences, we're breaking new ground by uniting the disciplines of Business Administration, Healthcare Management, and Digital Health Technology for the very first time.

Our aim is to nurture the future leaders of healthcare, equipping you with the skills to navigate the evolving landscape of digital health, and providing a clear path to a career in healthcare administration or healthcare entrepreneurship. We also offer a range of Master's and Certificate programmes under the School of Postgraduate Studies, available both online and face-to-face, designed to enhance the skills of healthcare professionals already in the field.

What sets our School apart is the seamless blend of talent from business, management, information analytics, and digital technology with a unique focus on healthcare. This results in a diverse and interdisciplinary community, capable of tackling crucial issues at the intersection of digital technology and healthcare. At IMU, we offer the unique opportunity to immerse yourself fully in a vibrant healthcare community while gaining hands-on experience in applied IT in healthcare. Your journey here is a combination of innovation and empowerment, and we can't wait to see where it takes you.

**Prof Saravanan A/L Muthaiyah**

**Dean, School of Business and Technology, IMU**

BA in Finance and Accounting, MSc Information Technology, PhD Computer Science

The journey to becoming a compassionate healthcare professional extends beyond lecture halls. Campus life is where lifelong memories are made. IMU takes your entire experience into consideration, designing our campuses to ensure holistic growth. Here, learning is accompanied by laughter, and knowledge supported by collaborations, application and friendships that form lifelong bonds. Our campus is your vibrant hub where you'll find the rhythm to stay inspired. Here's a glimpse of the enriching experiences waiting for you:

- **Green Zone**
- **IMU Healthcare**
- **Indoor Game Studio**
- **Fully-equipped Gym**
- **Dance Studio**
- **Pandan Serai Cafe**
- **Recreational Student Lounge**
- **Medical Museum**
- **Research Labs**
- **Clinical Skills & Simulation Centre**
- **Multidisciplinary Labs**



Feel the vibes of Kuala Lumpur

IMU is just a short walk to the Sri Petaling and Bukit Jalil LRT stations, and it's your direct link to Malaysia's capital, affectionately known as Kuala Lumpur (KL). Feel the vibes of our captivating city, where tradition meets all things trending. Boasting a rich cultural tapestry, vibrant street markets, iconic landmarks, and foodie havens at every turn, you'll find something to do, 24/7. Its bustling streets showcase Malaysia's diverse population, multi cultures, and ethnicities.

KL is also a global hub for business, innovation, and education, making it an ideal base for a well-rounded academic journey. With its rich variety waiting to be explored, KL invites you to experience its energy, variety, and hospitality.



# Your holistic new chapter begins here

## Make meaningful, lifelong connections

We're not just dedicated to nurturing your dreams; we're here to help you cultivate lifelong connections with peers, esteemed alumni, and inspiring lecturers.



At IMU, we understand every student's journey is a unique and transformative experience. Your wellbeing and aspirations are our priority. That's why we've established our student support services that complement your academics throughout your exciting new journey. From sports to social clubs, cultural to religious societies, and whether you seek academic guidance, counselling, or career advice, our dedicated team will give you the support you need to thrive:

- **Sports and Social Clubs**
- **Cultural and Religious Societies**
- **Student Representative Council (SRC)**
- **New International Students Support**
- **Scholarships and Financial Assistance**
- **Accommodation and Disability Support**
- **Counselling and Mental Health Support**
- **Student Welfare, Insurance, and General Services**
- **Student Talent and Development**
- **Alumni Relations**

Beyond just an educational institution, IMU, is your partner in holistic and personal growth, dedicated to nurturing you to become a healthcare professional who is also the best version of yourself.

Discover, develop, and connect





# Bachelor in Digital Health (Hons)



Scan the QR code for  
programme details.

**Duration** | 3 years    **Commencement** | Jul & Sep  
Programme to be completed locally.

## Prepare to innovate the future of healthcare

IMU's Bachelor in Digital Health (Hons) offers all students from both science and non-science backgrounds the opportunity to embark on their health-related careers beyond the conventional IT degree.

In this programme, you will be equipped with the essential digital health skills to advocate digital transformation in healthcare. Learn about the revolutionary use of Information and Communication Technologies (ICT) that currently shapes the development of digital health, as well as other applications of digital technologies in healthcare.

# Bachelor of Business Administration with Healthcare Management (Hons)



Scan the QR code for  
programme details.

**Duration** | 3 years    **Commencement** | Jul & Sep  
Programme to be completed locally.

## Join the foundational backbone of healthcare

For those seeking to go a step above a general Business degree, IMU's Bachelor of Business Administration with Healthcare Management will give you an edge over the rest with a solid foundation in healthcare management.

The core of this programme focuses on business foundation, allowing you to thrive in the ever changing landscape of the healthcare industry and will vastly benefit those seeking to work in non-healthcare related fields.

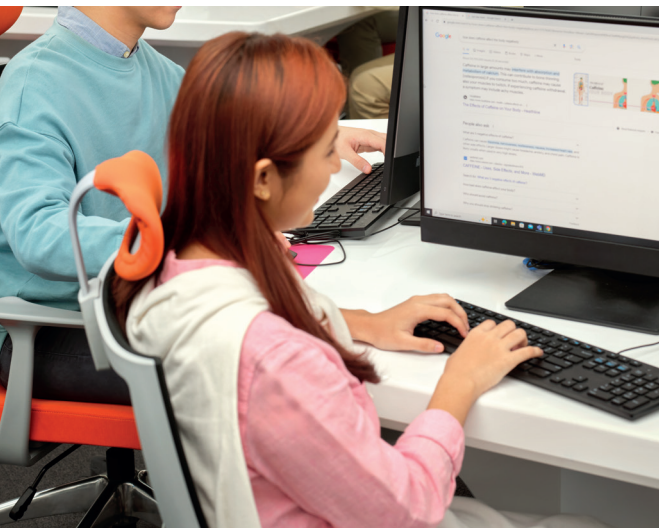
# Empowering purpose-driven leaders in healthcare and business

1:2

Faculty to student ratio for School of Business and Technology

43%

Faculty members are registered with local and/or international accredited associations and professional bodies.



## First of its kind

Join the pioneering class at Malaysia's only private health-related university. IMU is the first and only institution to offer a programme in Digital Health. The programme blends Information and Communication Technologies (ICT), Data Analytics, and Healthcare components in its curriculum; training its students to take on the innovative world of digital healthcare. IMU continually strives to adapt to contemporary healthcare needs through updating its curriculum and introducing new schools, and programmes.



Stay ahead of the curve with IMU. At the school of Business and Technology, build your confidence to face the intricate world of digital healthcare, and rise to the challenge.

## Nurturing mentors and peers

At IMU, we believe in fostering a well-rounded, vibrant community, and camaraderie for all our students. Students are taught by our highly experienced and knowledgeable faculty members who will prepare you to effectively succeed in your industry of choice. All IMU students are also allocated a mentor throughout the duration of their studies to bolster their personal and educational growth. Students can also seek peer-assistance learning in order to gain a better grasp directly from those in their shared programme.

# Relevant, real-world education



## Connecting you with the industry

To ensure students are industry-ready and employable upon graduation, IMU boasts excellent opportunities for hands-on experience, networking, and career exploration. Our initiatives include forging valuable industry partnerships, facilitating placements, hosting experienced faculty and guest industry speakers, conducting workshops, enabling student mobility placements overseas, and fostering research collaborations. These efforts ensure that both students and faculty stay up-to-date with the latest developments in the field.



## Expand your horizons

Build your network of work connections with our local and international industry partners, in both healthcare management and non-healthcare related industries. Through this nature of collaboration, our graduates are equipped to take on the industry upon graduation.

Additionally, IMU programmes also provide its students with a direct path to further their education overseas. Students will also gain a global perspective through resource sharing, research collaborations, and gain a broader understanding of international challenges and opportunities.

### Our partner university



• Applicable to Bachelor in Digital Health (Hons) programme only.

# Carve your path in healthcare

Graduates of IMU's School of Business and Technology can choose to pursue various promising career pathways in the rapidly evolving healthcare and technology sectors. Graduates can embark their careers within the public or private sector in hospitals, clinics, long-term care facilities, health insurance companies, or even government health agencies. Graduates can explore roles as healthcare data analysts or digital health consultants focusing on interpreting and managing health data to enhance patient care.

Graduates may opt for more specialised areas such as finance, human resources, or information management within healthcare settings that also offer avenues for career growth. Alternatively, they can opt for academic and research positions to further advance the field of digital health in Malaysia. For those looking to further their professional development, graduates may continue their studies through advanced degrees or certifications that can further enhance their career prospects.

- AGTC Genomics
- Digital Health Research & Innovation Unit (DHRi), Institute for Clinical Research (ICR)
- Disruptive Doctors (formerly known as Medic Footprints Malaysia (MFM))
- Doc2Us (HeyDoc International)
- Gene Junction
- HealthMetrics
- Imperial Medical Solutions (IMS)
- MyBiomark
- Sector for Biostatistics & Data Repository, National Institutes of Health Malaysia (NIH)
- And many more

## Our industry partners



## Scholarships

- IMU-Merit Scholarship
- IMU-Need Scholarship

• Open to Malaysian applicants ONLY.  
• Applicant must be applying for their First Degree Programme.

## Financial Assistance

- National Higher Education Fund (NHEF) or Perbadanan Tabung Pendidikan Tinggi Nasional (PTPTN)
- Hong Leong Foundation
- Public Service Department (PSD) or Jabatan Perkhidmatan Awam (JPA)
- Majlis Amanah Rakyat (MARA)\*
- Employee Provident Fund (EPF) or Kumpulan Wang Simpanan Pekerja (KWSP)
- Yayasan Negeri
- Kuok Foundation
- AFFIN Education Financing-i
- Koperasi Jayadiri Malaysia Berhad (KOJADI)\*\*
- Maybank Education Loan or Financing-i

• Open to Malaysian applicants ONLY.  
• \* Eligible for Malay or Bumiputera applicants ONLY.  
• \*\* Applicant needs to be a KOJADI member.



**From day one,  
our mission is to shape  
future global health  
leaders with world-  
class education to set  
you apart in healthcare.  
Thrive, prosper, and learn  
without borders at IMU.**



### • Holistic, global education

IMU's School of Business and Technology is proud to offer its students with a direct path to further their education to Rutgers University, USA to enrol for their Master in Health Informatics (MHI) programme. Furthermore, students also will be exposed to a global perspective and broaden their understanding through international resource sharing, and research collaborations opportunities.

### • Engaged mentorship and peers community

Personal care is given to assist students integrate better at IMU and build camaraderie. The School's Mentor-Mentee system and peer-learning assistance also boasts an excellent means of guidance in all things academic as well as students' altruistic growth.

### • Insightful partnerships and network

Students will undergo industrial training in the digital health-related sectors to gain real-life experience, network, and explore other career options. Guest lectures, webinar sessions, and Digital Health Week allows students to share experiences and network.

### • Collaborative extracurricular activities

Our aim is to impart value beyond the classroom to all our students through industry placements, networking, working experience, career talks, field trips, community services, and more. This ensures that by the end of one's journey at IMU's School of Business and Technology, students will gain knowledge, develop their soft skills, and leave feeling inspired.

**Throughout your journey, you will enjoy access to countless programmes, activities, inspirations, facilities, and opportunities to help you flourish and thrive throughout your journey in the world of healthcare and business. We look forward to welcoming you soon!**





**IMU Main Campus**  
126, Jalan Jalil Perkasa 19  
Bukit Jalil, 57000, Kuala Lumpur  
Malaysia

Formerly known as  
International Medical University

+603 2727 7515  
start@imu.edu.my  
www.imu.edu.my  
International Medical University  
IMUMalaysia  
imumalaysia  
imu\_malaysia  
International Medical University



KP/JPS/5195/US/2, KP(JPS)/DFT/US/W03  
KPT/JPT(N/482/6/0209)03/2028 | MQA/PSA14380  
KPT/JPT(N/0414/6/0180)01/2029 | MQA/PSA17191

**The IMU has been certified with ISO21001:2018 and ISO 45001:2018 for the provision of Pre-University, Undergraduate and Postgraduate Programmes for the Medical and Healthcare Professions.**

Every effort has been made to ensure the accuracy of the information given on this brochure but it is subject to alteration without notice. The University reserves the right to alter or delete any of the information included at any time and it shall not be bound by any errors or omissions and cannot accept liability in respect thereof. Please visit [www.imu.edu.my](http://www.imu.edu.my) for the most up-to-date information.

Published by IMU, 2024/03/v2